

All about NICOLE

What is NICOLE?

Objectives and Organization

What is NICOLE?

NICOLE is a network for the stimulation, dissemination and exchange of knowledge about all aspects of industrially contaminated land. NICOLE has around 100 members from 18 European countries. Members include industrial companies and trade organizations (problem holders), service providers/technology developers, universities and independent research organizations (problem solvers) and governmental organizations (policy makers).

The network began in February 1996 as a concerted action under the 4th Framework Programme of the European Community, but with strong support quickly became self-supporting, financed by the fees of its members, in 1999.

BENEFITS OF NICOLE MEMBERSHIP

For European Industry and Service Providers:

- An improved understanding of the underlying scientific and technological principles that will guide response to an important environmental issue
- Opportunities to share actual experiences (good practices and not so good practices) on contaminated land management approaches
- Opportunity to be part of forming industry-wide input to contaminated land policy groups
- Opportunity to be at the "front end" of technical and regulatory initiatives before they are broadly described publicly
- Help formulate joint benchmarks with the regulatory community on areas of common understanding

For European Academia:

- Improved opportunities for dialogue between academics and industry
- A window to understanding the key research needs of industry related to contaminated land
- Opportunities to identify potential industrial partners for research projects
- Opportunities to participate in network workshops
- Opportunities to apply research results and knowledge
- Into practice

FEEDBACK FROM MEMBERS

"The international character and the very high level of the workshops, make it "a must for remediation experts" to be a member of the NICOLE network."

Lucia Buvé - UMICORE

"The open and informal discussions with other industrial representatives, consultants and scientists, lead to a lot of good ideas and knowledge exchange. Also NICOLE, by its workshops, facilitates interactions with regulators at European level and national level (via its "sister network" for regulators, the Common Forum)."

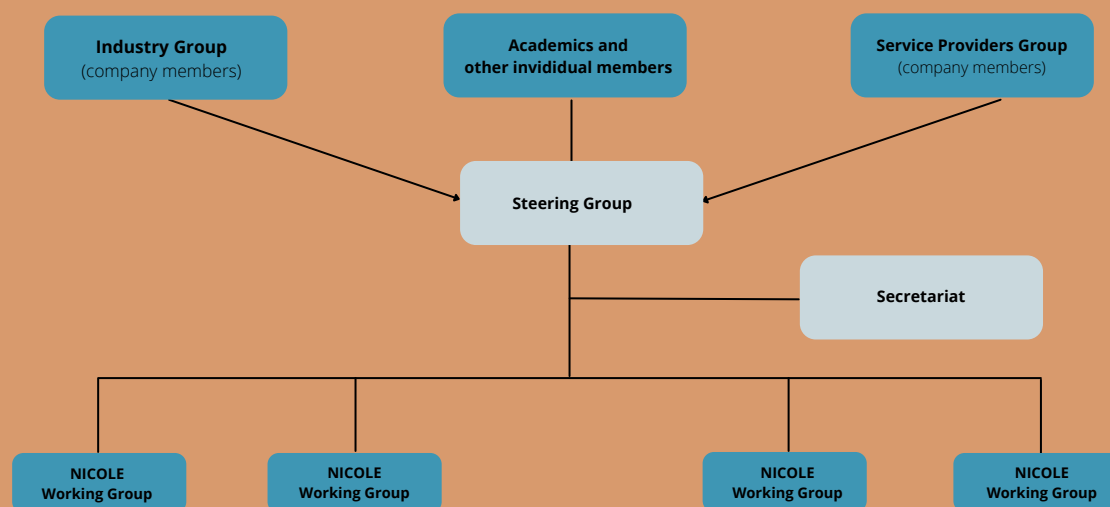
Anja J.C. Sinke - BP

"Taylor Wimpey have been members of NICOLE for 8 years. NICOLE is unparalleled for networking opportunities; putting EU legislation on the radar of industrial problem holders and technical and technological excellence. Better than that workshops and meetings are always genuinely enjoyable learning experiences."

Ian Heasman - TaylorWimpeyUK

THE ORGANISATIONAL STRUCTURE OF NICOLE

NICOLE is run and represented by its members and companies member groups, a steering group and thematic working groups.



WHO CAN BECOME MEMBER OF NICOLE AND ON WHAT CONDITIONS?

The Membership is open for:

	Fee in Euro per year	
	For members of East-European Countries*	For others
Companies (industrial companies and service provider/technology developer companies) and trade organizations	€2.000,00	€4.000,00
Small and medium sized enterprises (SME)**	€1.000,00	€2.000,00
Academics (from universities, research organizations and non-profit organizations)	€100,00	€2.00,00

BENEFITS OF NICOLE MEMBERSHIP

* Poland, Baltic countries, Czech Republic, Slovakia, Serbia, Hungary, Romania, Montenegro, Macedonia, Croatia, Bulgaria, Bosnia, Turkey, Republic of Moldova, Russia, Albania

** No more than 250 employees; annual turnover smaller than 50M Euro; no more than one third owned by any organization larger than an SME (based on turnover and number of employees), unless it is a financial investor or venture capitalist

Members will be requested to complete a registration form. Membership will be at an organizational level for companies and at an individual level for researchers and representatives from other non-profit organisations.

Membership

A NICOLE MEMBERSHIP ENTITLES YOU TO

- 2 or 3 Industry Subgroup meetings per year (for industrial members only)
- 2 or 3 Service Providers Subgroup meetings per year (for service providers only)
- 1 or 2 network meetings/workshops per year on topics of importance for contaminated land management
- Thematic Working Group meetings
- Newsletter and website

Besides the deliverables, there are a number of other benefits for NICOLE members.

Such as possibility of joint research activities, window to colleague-networks as Common Forum, meeting place for exchange of experiences.

For additional information about NICOLE, please contact the network secretariat:

Nan Su
Postbus 28249
3003 KE Rotterdam
The Netherlands
Mob: + 31 641374680
E-mail: nan.su@nicole.org
www.nicole.org