



network for  
industrially co-ordinated  
sustainable land  
management in europe

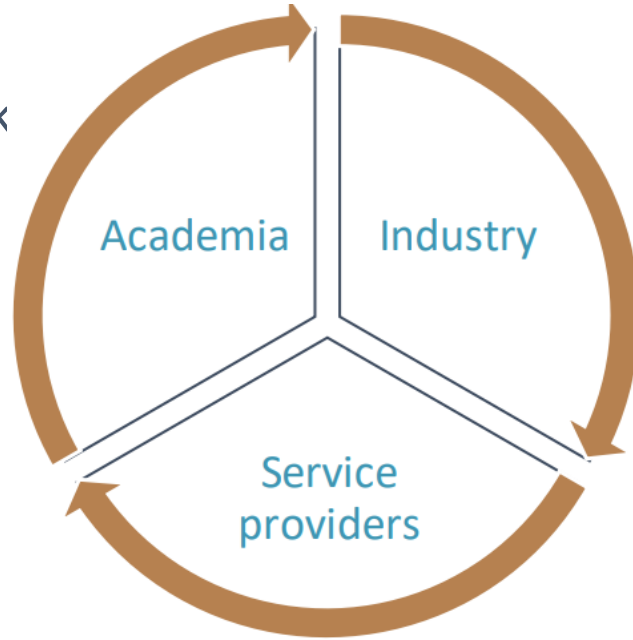
# Introduction to NICOLE

March 2023

# Who is NICOLE?

Leading European network to develop and share state-of-the-art solutions for impaired land and related environmental concerns

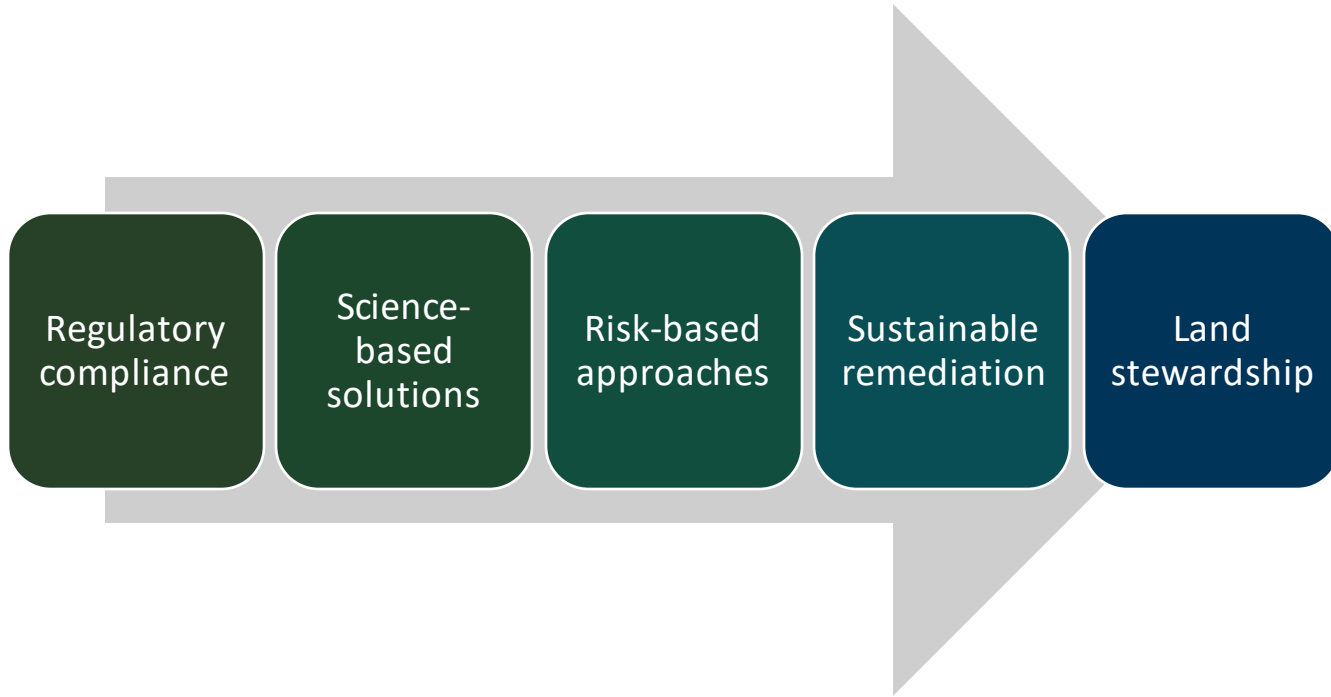
Focus on both liability management and value creation



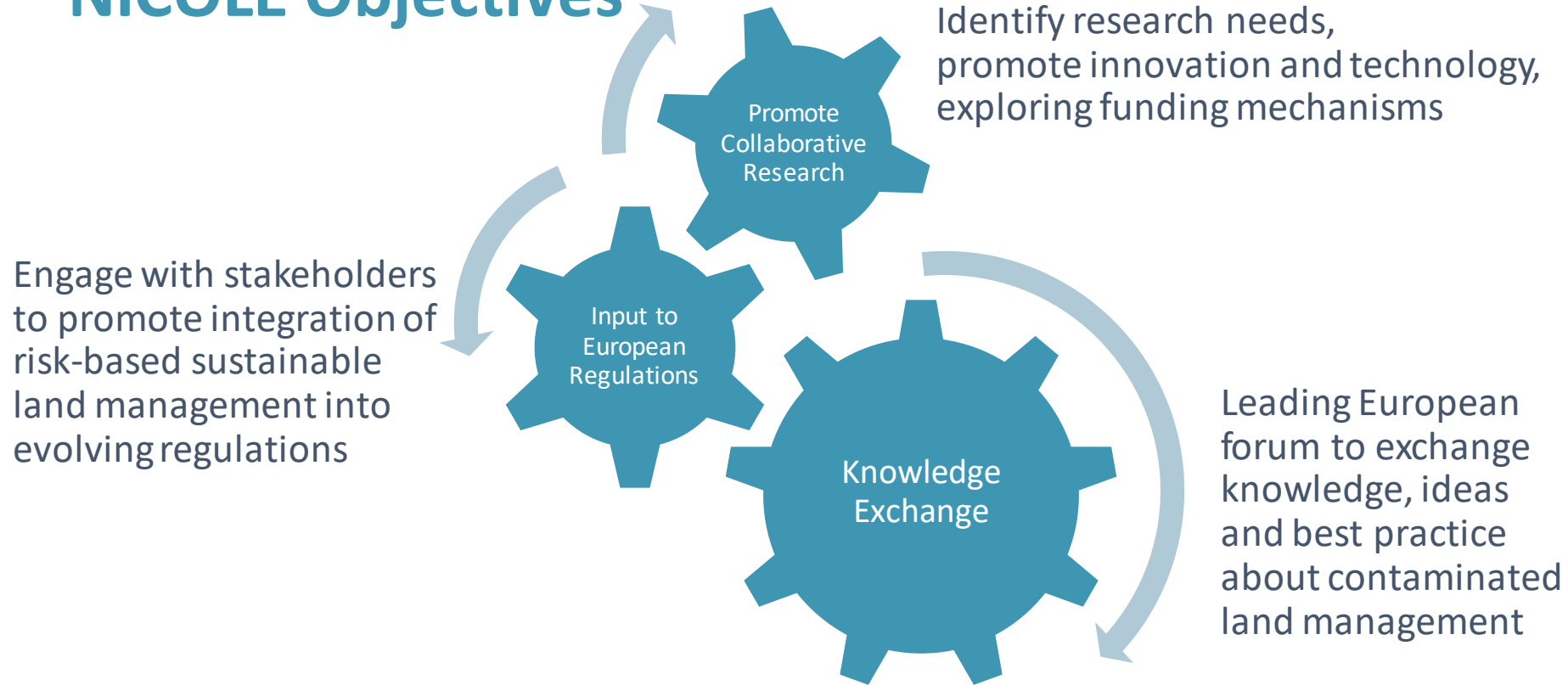
Established in 1996 as an Industry-led network as a Concerted Action project under the 4<sup>th</sup> Framework Programme of the European Community

Fully funded by members (26 industry, 52 service providers, 32 academics)

# NICOLE Evolution and Focus



# NICOLE Objectives



# NICOLE Activities

Two workshops per year

Active Working Groups:

- Regulatory
- PFAS
- Innovation
- Land Stewardship

Publications, position papers & reports

Innovation & Academic Awards

Partners with Common Forum, IMPEL, NICOLA, NICOLE LATAM, ITRC, ALGA, CRC, EUSO, FAO



## LAND STEWARDSHIP

Investing in The Natural, Social and Economic Capital of Industrial Land

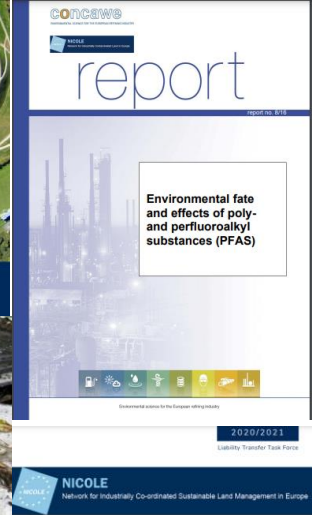


## ASBESTOS IN SOIL

A pan european perspective



## RISK-BASED MANAGEMENT OF MERCURY-IMPACTED SITES



## report

Environmental fate and effects of poly- and perfluoroalkyl substances (PFAS)

2020/2021

Liability Transfer Task Force



## ENVIRONMENTAL LIABILITY TRANSFER IN EUROPE REPORT



ATHENS STATEMENT



Applying circularity principles in contaminated land management in the context of the new EU Soil Strategy - The "Athens Statement" -